



ANANGU EDUCATION SERVICES
(Ernabella Office)

FS MCAFEE 3

SERVER UPDATE OF MCAFEE DAT FILES

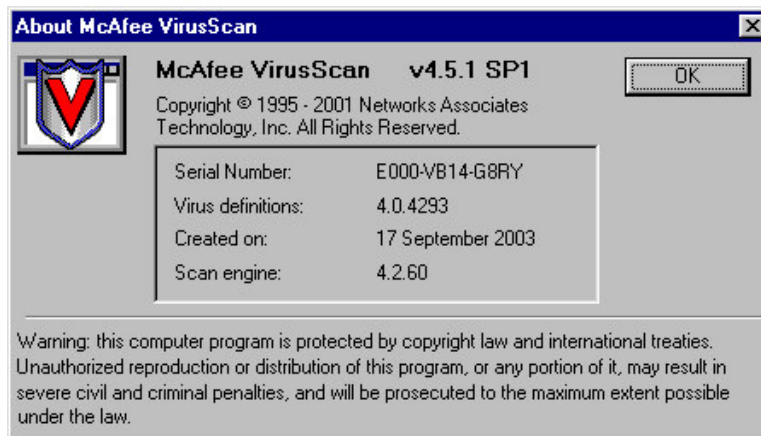
DATE: 8/2/04

Ensure you have the latest McAfee virus scanning software on your machines

To check for that right mouse click on the McAfee icon in the system tray in the bottom right hand corner of your screen (at the Desktop) and select About.

A screen similar to the one below will appear. You need to ensure that the v4.5.1 SP1 is loaded on your machine (if not then locate the McAfee CD that is part of your school's CD pack and load the program).

McAfee have dat file updates (which are files that contain fixes for known new viruses). To check your dat file version check the date of the Virus definition file It needs to be current (ie within a week).



RUNNING THE MCAFEE DAT FILE UPDATE ON THE SERVER

Double click on the McAfee autoupdate icon on the Server to run the update batch file. The autoupdate remotely access the McAfee website and download the latest dat file to the McAfee folder on the Server and when someone logs onto a workstation the login script file is set to check for and if necessary upgrade the dat file to the workstation.