



ANANGU EDUCATION SERVICES
(Ernabella Office)

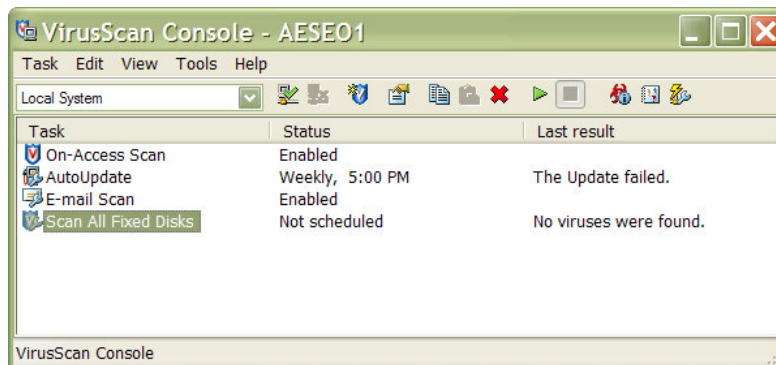
FS MCAFEE 4 MCAFEE 7.1

SCANNING YOUR WORKSTATION FOR VIRUSES

DATE: 8/02/04

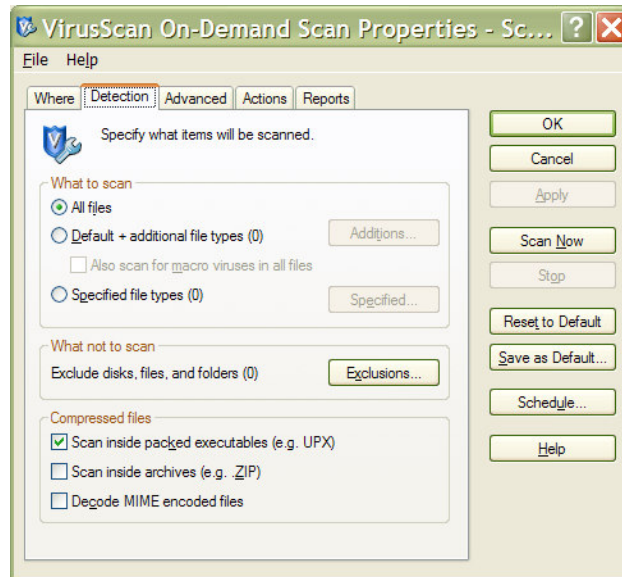
NB: These notes refer to McAfee 7.1 engine, however McAfee 4.5.1 SP1 has similar settings. You should be able to use these notes to scan for viruses using McAfee 4.5.1

1. Ensure you have the latest McAfee dat file installed on your machine. (Refer to FS McAfee 3 for school sites and FS McAfee 2 for standalone machines running McAfee 7.1)
2. Click on Start, Programs, Network Associates, Viruscan Console.
3. Right mouse click on Scan All Fixed Disks and select Properties



4. Select the Detection tab and tick Scan All Files
5. Select the Actions tab and select “Clean infected Files”

6. Click the Scan Now button



7. Close Network Associates.