



ANANGU EDUCATION SERVICES
(Ernabella Office)

SOFTWARE - WSFTP

FS WSFTP-1

CONFIGURING WS FTP

27/07/03

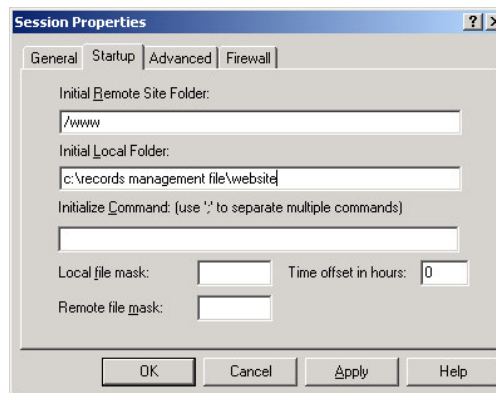
Install WS_FTPLE

This software is free for students, faculty members and staff members of educational institutions.

Double click the exe file to unzip and install the software. Fill in the licence agreement. Create a shortcut to the executable on the desktop.

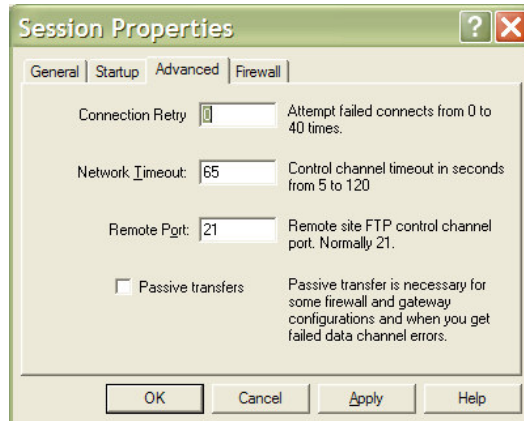
Uploading to the WWW using WS_FTPLE

- Run WS_FTPLE from desktop shortcut
- Click Startup tab
- Type /www in the Initial Remote Site Folder box
- Type in the file path for your website in the Initial Local Folder box
- Click Apply

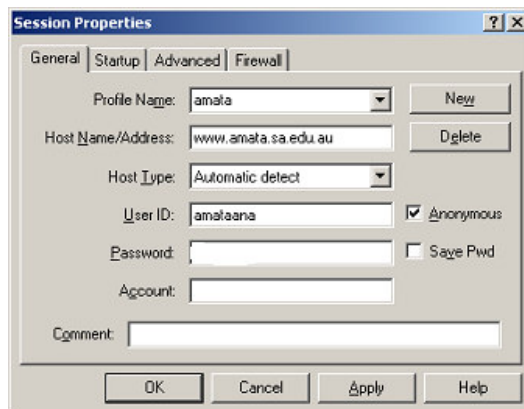


- Click the Advanced tab
- Under Session properties, make sure Passive Transfers is unticked.

- Click Apply



- Under the General tab, put in the host eg www.amata.sa.edu.au
- Put in the sa.edu Admin username and password
- Click Save Pwd



- In future, you will only need to run WS_FTPLE and click OK to connect to your website – all required fields have been saved
- select all files and folders from the Website folder on the left side to transfer across to the /www folder on the right side (Click the first, shift+Click the last)
- Click the > to begin the transfer. When prompted, say Yes to keep folder structure.
- When it is finished, click Close, then Exit
- Disconnect the Dial-up Connection

Quality Check

- Go into Internet Explorer.
- Check that it looks OK – test all links, etc.

Tip:

*The default homepage provided by SINA has the file name “welcome.html”. To replace the default school homepage provided and then upload your existing school’s home page to the WWW server, you will need to rename the file name of your existing homepage to “index.html” or “index.htm”. The SINA system has been prioritised to recognise this page first if it exists in your files and ignore the **welcome.html**.*

Tip.

After uploading changed pages, in Internet Explorer click Refresh to see the new version. If Refresh doesn’t work, try Shift + Refresh to force it to download a new version of the page rather than using the locally cached version.

Tip.

After uploading, if links to graphics stop working, it could be because of spaces or uppercase characters in file names.

Tip.

In WS_FTPLE, re-uploading will replace existing files/folders of the same name – no need to delete from the web first. If you do want to delete items, all files must be deleted from folders before you can delete the folder.