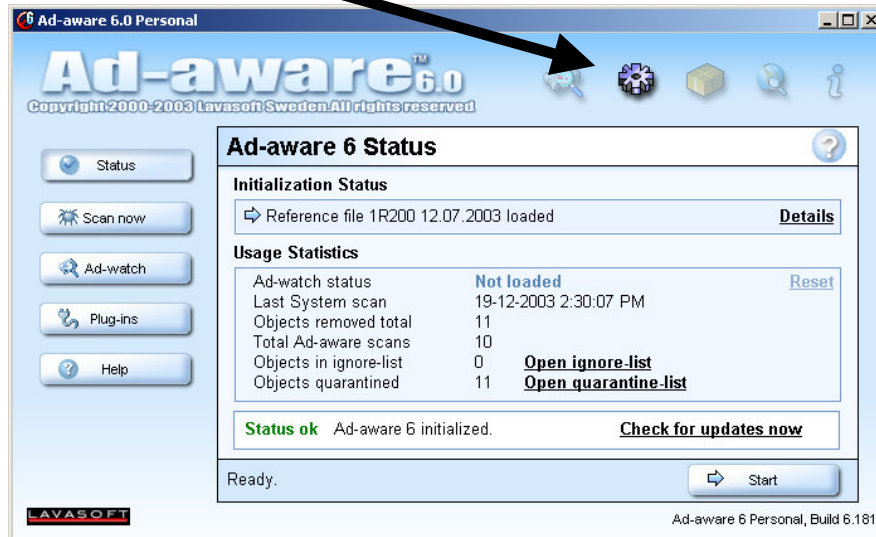


Configuring Ad-aware to run on Windows startup

- Click on Settings



- Change settings to same as below.

- Click on Customise



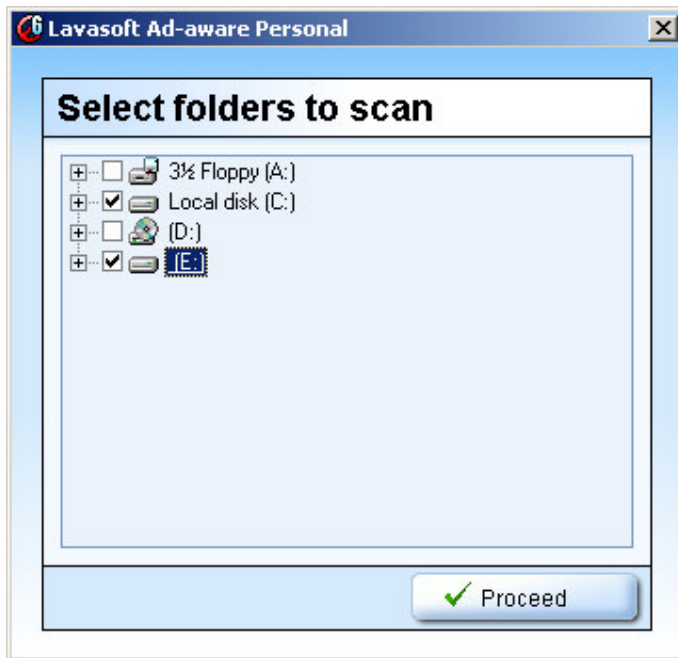
- Change settings to those below



- Click on Customise



- Click on Click here to select drives + folders, and then select all fixed drives



- Click on Proceed to save the settings
- Click on Tweak on the left side bar
- Click on Scanning Engine and set as below



- Click on Proceed to save the settings

- Close screen below, then logoff and logon.



- When Ad-Aware starts at logon, click on the Minimise button. Any spyware files will be automatically deleted and the Ad-aware program will close