



ANANGU EDUCATION SERVICES
(Ernabella Office)

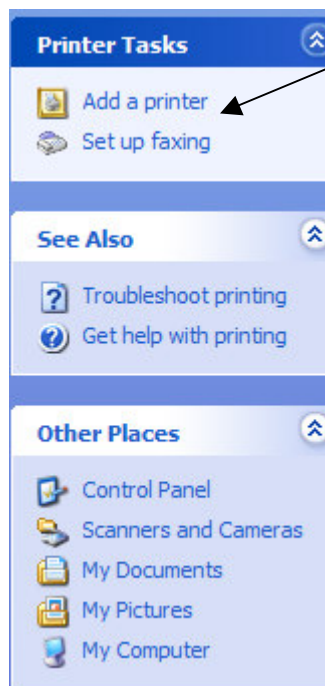
WINDOWS XP Professional

FS 2-XP

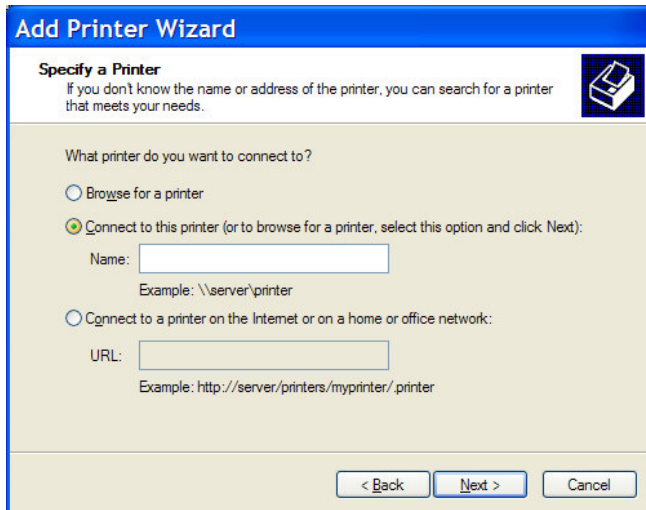
ADDING NETWORK PRINTER

DATE: 26/7/03

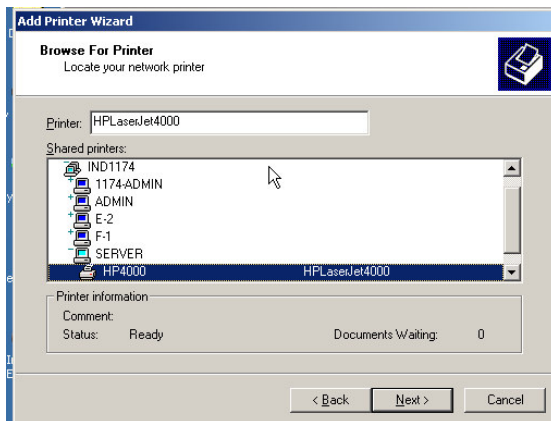
1. Click Start, Settings, Printers, click on Add a printer in the Printer Tasks box.



2. Add Printer Wizard will appear, click Next,
3. Select “A network printer or a printer attached to another computer” and click Next



4. Select "Connect to the printer (or browse for a printer) and click Next



5. Wait for the computer to locate all the shared printers,
6. In the Shared Printers box Select the appropriate printer, by clicking on the Server machine to open and then selecting the printer eg HP4000
7. The Printer box should read HPLaserjet4000 or the path of the machine eg [\\workstation name\hp4000](#) click Next
8. Select Yes to set it as the default printer, click Next
9. Click Finish.