



**ANANGU EDUCATION SERVICES**  
( Ernabella Office )

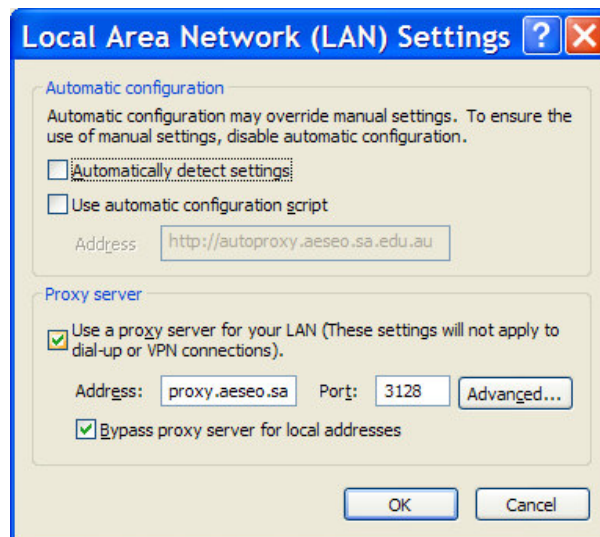
**SOFTWARE – INTERNET EXPLORER**

**FS IE6-1**

**CONFIGURING INTERNET EXPLORER FOR SINA**

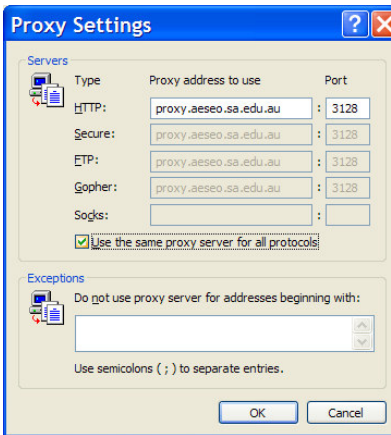
**DATE: 26/7/03**

1. Right mouse click on Internet Explorer
2. Select Properties
3. Select Connection Tab
4. Select LAN Settings button
5. Tick “Use a Proxy Server for your LAN

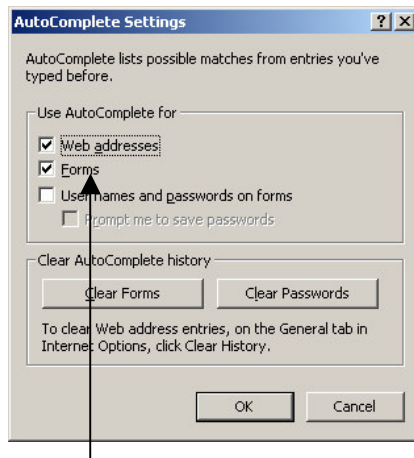


6. Click the Advanced tab
7. In the HTTP area type in proxy.schoolname.sa.edu.au where schoolname is your SINA domain name eg proxy.amata.sa.edu.au

8. In the port section type in 3128.
9. Tick Use the same proxy server for all protocols.



10. Click OK
11. Click on the **Content** Tab
12. In Personal Information section Click on the **Autocomplete** button



13. **Tick** on the Forms option and **uncheck** the username and password on forms option
14. Click **OK**
15. Click on the **Advanced** tab and scroll down to the Security Section and select **Empty Temporary Internet Files Folder when browser is closed** by clicking in the check box adjacent to the option
16. Click **OK**